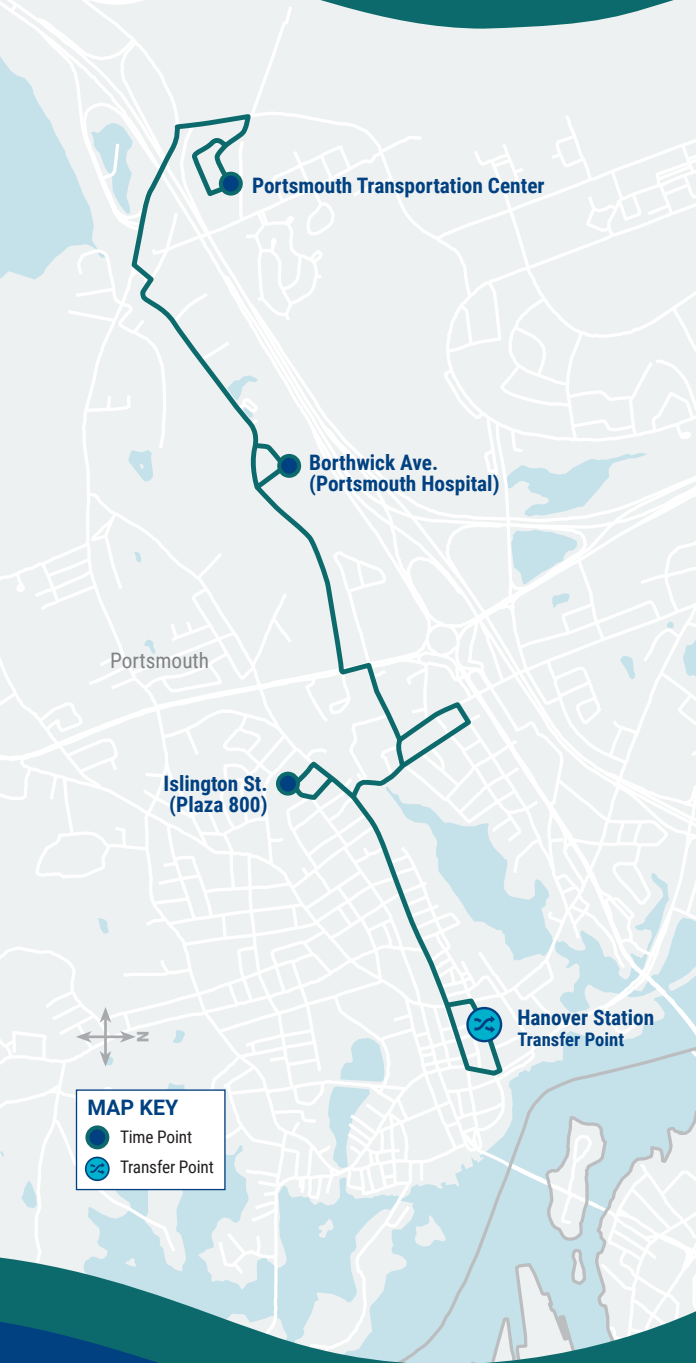


40

Route 40 Map

Portsmouth Islington Borthwick



MAP KEY

- Time Point
- ⊕ Transfer Point



Ride Information

COAST BUS FARES

Base Cash Fare **\$1.50**
All passengers ages 5 and up are required to pay this fare each time they board a COAST bus.

Half-Fare **\$ 0.75**
Passengers 65 and older, or passengers with a disability are entitled to pay half the cash fare. Proof of eligibility is required by showing a Medicare card, photo ID with birth date, COAST ADA Paratransit Card, or COAST Half-Fare Card. Please contact COAST to apply for a Half-Fare Card.

Multi-Ride Tickets and Passes
Available at www.coastbus.org or call 603-743-5777, TTY 711.

Unlimited Monthly Pass **\$ 52**
Unlimited rides on COAST Routes for the month.

YOUR RIGHTS

COAST adheres to all Federal regulations regarding Civil Rights. If you need to request an ADA Reasonable Modification/ Accommodation, or if you believe you have been discriminated against or would like to file a complaint under the ADA or Title VI, please contact COAST's Civil Rights Officer at 603-516-0788, TTY 711 or email CivilRights@coastbus.org.

NO SERVICE DAYS
 COAST does not operate on the following holidays:

- New Year's Day
- Martin Luther King Jr./ Civil Rights Day
- Memorial Day
- Independence Day
- Labor Day
- Thanksgiving Day
- Christmas Eve Day
- Christmas Day



42 Sumner Drive • Dover, NH 03820
 603-743-5777 • TTY 711 • www.coastbus.org
This brochure is available in alternative formats upon request.

Bus Schedule & Map 40



Effective
09.17.22

ROUTE
40

Portsmouth Islington Borthwick



Find all of the full COAST schedules online at coastbus.org

MAP OUT YOUR GAME PLAN

Planning your trip has never been easier!

www.coastbus.org



COAST SYSTEM MAP



OUTBOUND • INBOUND

Route 40

Portsmouth • Islington • Borthwick

How to Read the Schedule

Printed bus schedules only show the timepoints ● (major bus stops where the bus will hold until the scheduled departure time). In between those timepoints are many other stops that you can use. For a full listing of bus stops, visit www.coastbus.org, or use the Passio GO! App.

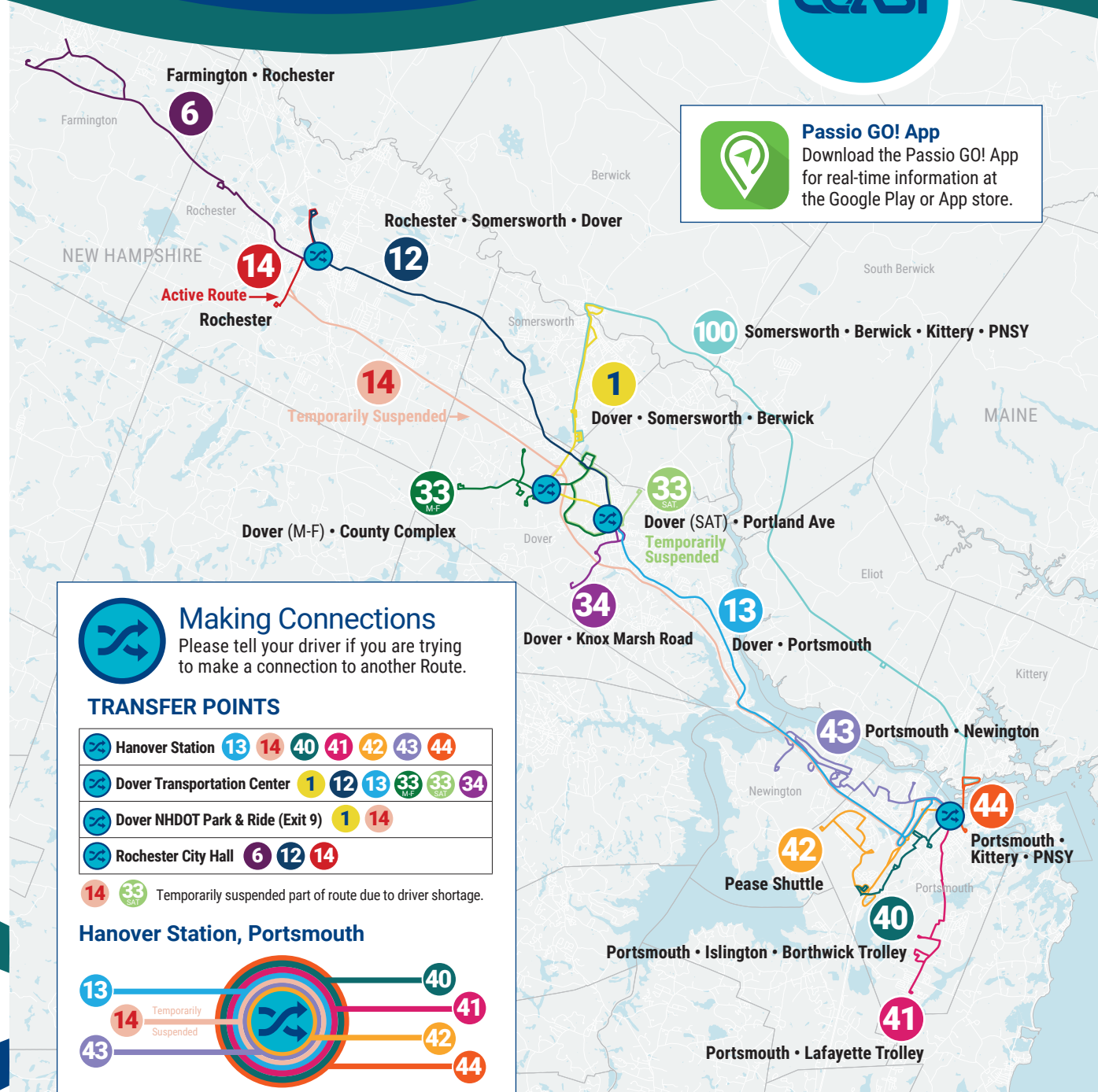
The times shown represent the number of minutes after the hour that the bus will depart from that stop. Last stop times are arrivals. Any exceptions will be noted.

OUTBOUND (M-Sat)	Service On Every Hour		
Hanover Station - Portsmouth Transportation Center	First Bus	Minutes Past Hour	Last Bus
● Hanover Station	6:00am	:00*	7:00pm
● Islington St. (Plaza 800)	6:07am	:07*	7:07pm
● Borthwick Ave. (Ports. Hospital)	6:15am	:15*	7:15pm
● Portsmouth Transportation Center	6:23am	:23*	7:23pm

*No Service during the hour of 3pm.

INBOUND (M-Sat)	Service On Every Hour		
Portsmouth Transportation Center - Hanover Station	First Bus	Minutes Past Hour	Last Bus
● Portsmouth Transportation Center	6:24am	:24*	7:24pm
● Borthwick Ave. (Ports. Hospital)	6:31am	:31*	7:31pm
● Islington St. (Plaza 800)	6:39am	:39*	7:39pm
● Hanover Station	6:47am	:47*	7:47pm

*No Service during the hour of 3pm.



Passio GO! App
 Download the Passio GO! App for real-time information at the Google Play or App store.



Making Connections

Please tell your driver if you are trying to make a connection to another Route.

TRANSFER POINTS

☞ Hanover Station	13 14 40 41 42 43 44
☞ Dover Transportation Center	1 12 13 33 _{M-F} 33 _{SAT} 34
☞ Dover NHDOT Park & Ride (Exit 9)	1 14
☞ Rochester City Hall	6 12 14

14 33_{SAT} Temporarily suspended part of route due to driver shortage.

Hanover Station, Portsmouth



MAP IT!

For a full listing of bus stops, visit www.coastbus.org or use the Passio GO! App.