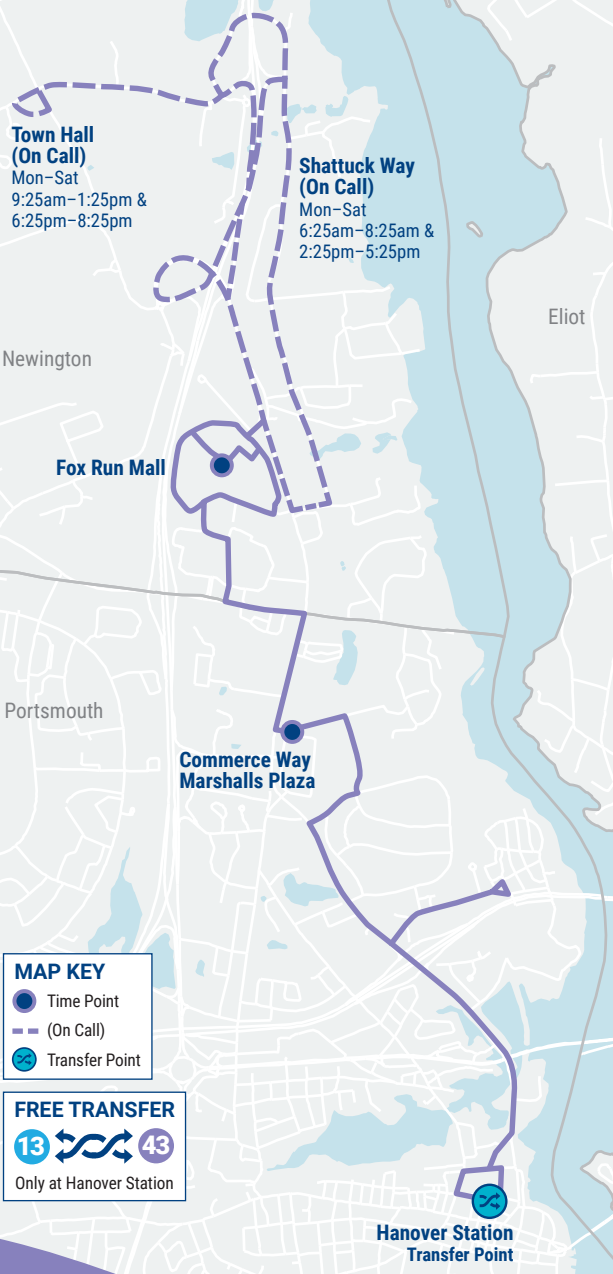


# 43

## Route 43 Map Portsmouth · Newington



## Ride Information

### COAST BUS FARES

**Base Cash Fare** **\$1.50**  
All passengers ages 5 and up are required to pay this fare each time they board a COAST bus.

**Half-Fare** **\$ 0.75**  
Passengers 65 and older, or passengers with a disability are entitled to pay half the cash fare. Proof of eligibility is required by showing a Medicare card, photo ID with birth date, COAST ADA Paratransit Card, or COAST Half-Fare Card. Please contact COAST to apply for a Half-Fare Card.

**Multi-Ride Tickets and Passes**  
Available at [www.coastbus.org](http://www.coastbus.org) or call 603-743-5777, TTY 711.

**Unlimited Monthly Pass** **\$ 52**  
Unlimited rides on COAST Routes for the month.

### YOUR RIGHTS

COAST adheres to all Federal regulations regarding Civil Rights. If you need to request an ADA Reasonable Modification/ Accommodation, or if you believe you have been discriminated against or would like to file a complaint under the ADA or Title VI, please contact COAST's Civil Rights Officer at 603-516-0788, TTY 711 or email [CivilRights@coastbus.org](mailto:CivilRights@coastbus.org).

### NO SERVICE DAYS

COAST does not operate on the following holidays:

- New Year's Day
- Labor Day
- Martin Luther King Jr./ Civil Rights Day
- Thanksgiving Day
- Memorial Day
- Christmas Eve Day
- Independence Day
- Christmas Day



42 Sumner Drive · Dover, NH 03820  
603-743-5777 · TTY 711 · [www.coastbus.org](http://www.coastbus.org)  
This brochure is available in alternative formats upon request.

## Bus Schedule & Map 43



Effective  
09.17.22

ROUTE  
**43**

Portsmouth · Newington



Find all of the full COAST schedules online at [coastbus.org](http://coastbus.org)

## MAP OUT YOUR GAME PLAN

Planning your trip has never been easier!

[www.coastbus.org](http://www.coastbus.org)



# COAST SYSTEM MAP



## EXPRESS • INBOUND • OUTBOUND Route 43 Portsmouth • Newington

### How to Read the Schedule

Printed bus schedules only show the timepoints ● (major bus stops where the bus will hold until the scheduled departure time). In between those timepoints are many other stops that you can use. For a full listing of bus stops, visit [www.coastbus.org](http://www.coastbus.org), or use the Passio GO! App.

The times shown represent the number of minutes after the hour that the bus will depart from that stop. Last stop times are arrivals. Any exceptions will be noted.

EXPRESS (M-Sat)	Single Run Only		
DOVER - NEWINGTON	First Bus	Minutes Past Hour	Last Bus
● Dover Transportation Center	6:30am	--	--
● Fox Run Mall	6:45am	--	--

INBOUND (M-Sat)	Service On Every Hour		
NEWINGTON - PORTSMOUTH	First Bus	Minutes Past Hour	Last Bus
● Fox Run Mall	6:30am	:30	8:30pm
● Commerce Way (Marshalls Plaza)	6:36am	:36	8:36pm
● Hanover Station	6:57am	:57	8:57pm

OUTBOUND (M-Sat)	Service On Every Hour		
PORTSMOUTH - NEWINGTON	First Bus	Minutes Past Hour	Last Bus
● Hanover Station	7:00am	:00	8:00pm
● Commerce Way (Marshalls Plaza)	7:09am	:09	8:09pm
● Fox Run Mall	7:22am	:22	8:22pm

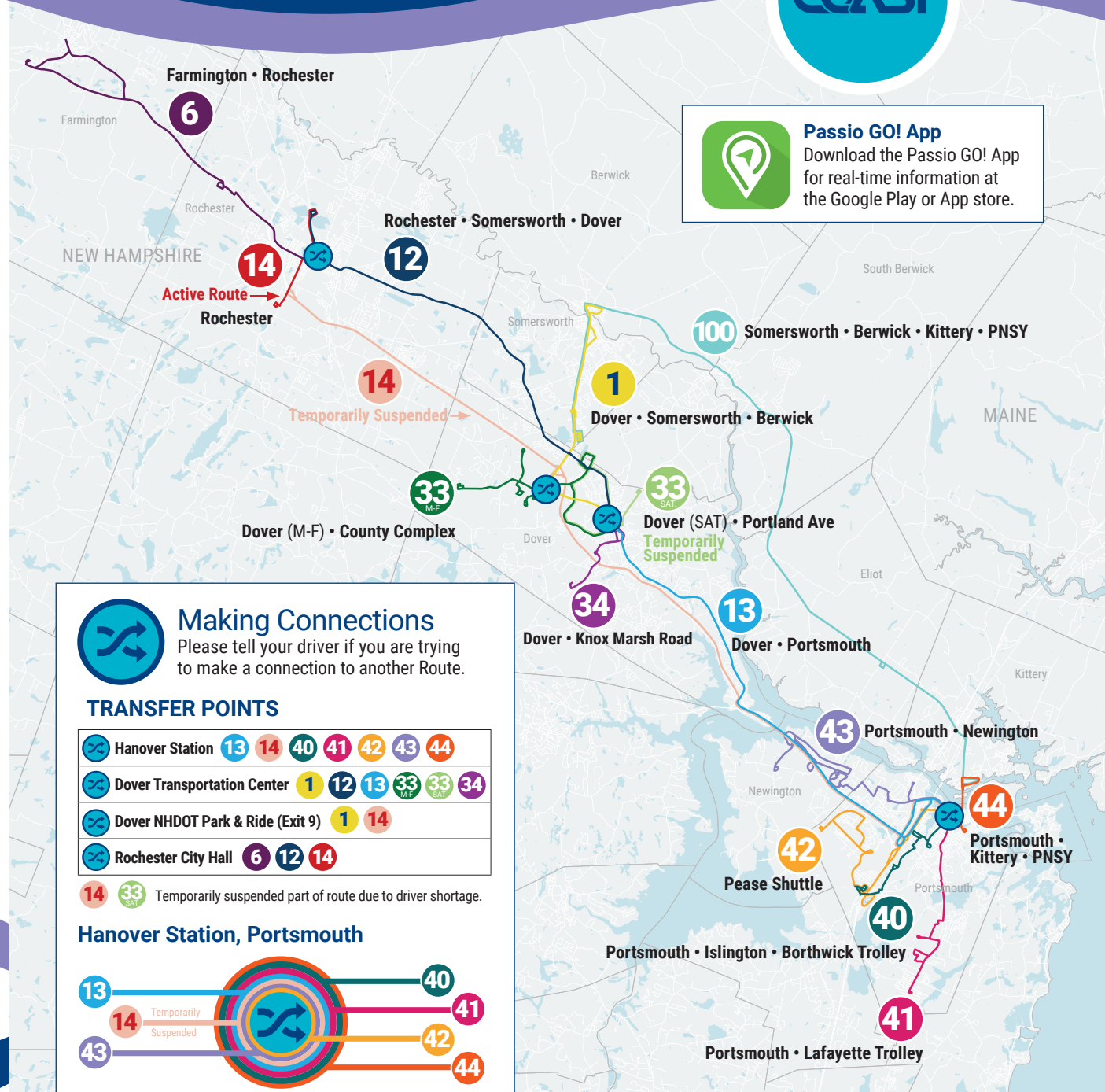


### MAP IT!

For a full listing of bus stops, visit [www.coastbus.org](http://www.coastbus.org) or use the Passio GO! App.



**Passio GO! App**  
Download the Passio GO! App for real-time information at the Google Play or App store.



### Making Connections

Please tell your driver if you are trying to make a connection to another Route.

#### TRANSFER POINTS

☞ Hanover Station	13 14 40 41 42 43 44
☞ Dover Transportation Center	1 12 13 33 <sub>MF</sub> 33 <sub>SAT</sub> 34
☞ Dover NHDOT Park & Ride (Exit 9)	1 14
☞ Rochester City Hall	6 12 14

14 33 Temporarily suspended part of route due to driver shortage.

#### Hanover Station, Portsmouth

